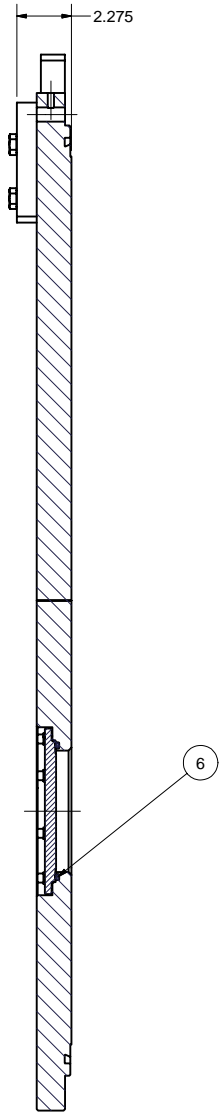
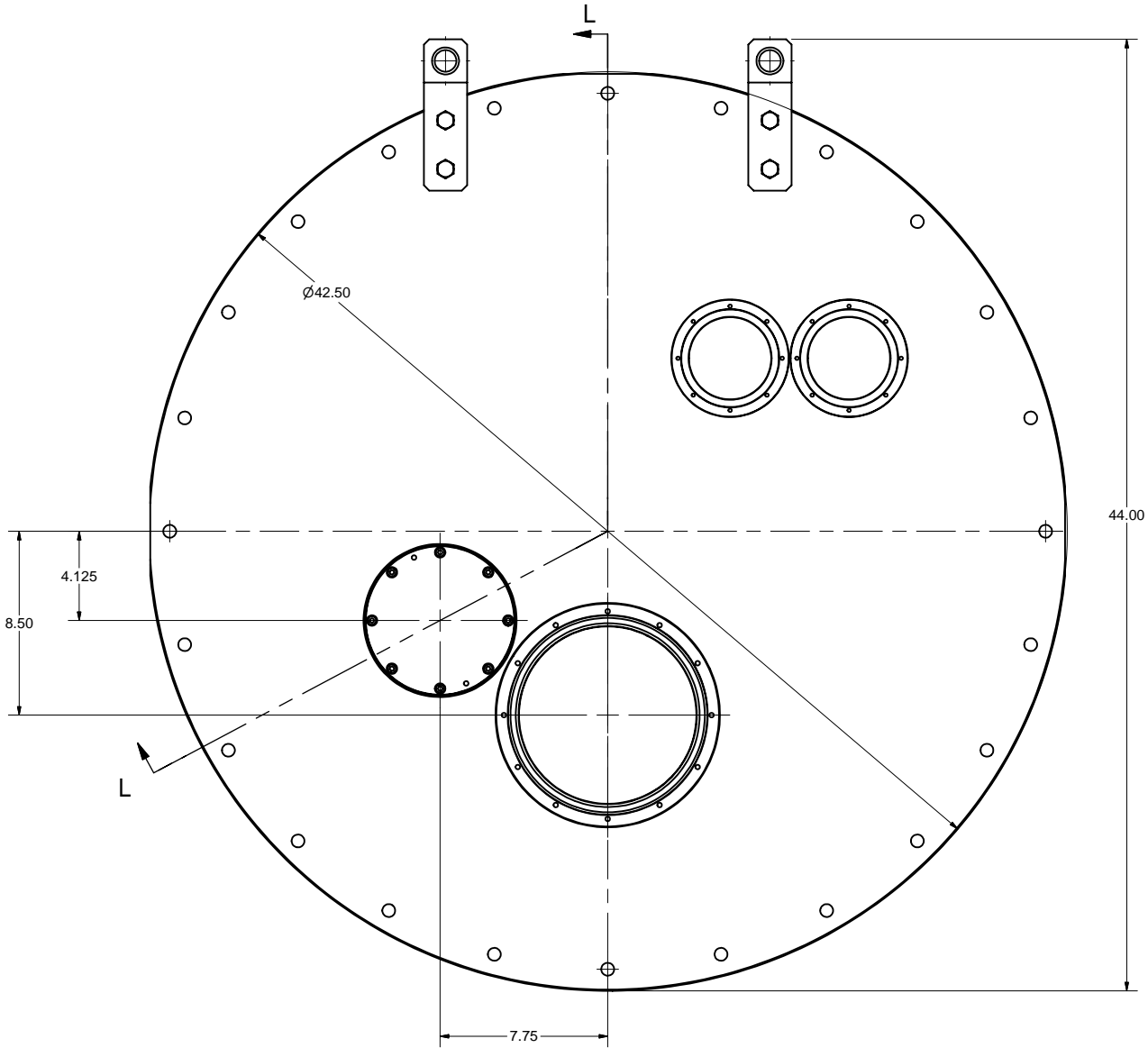
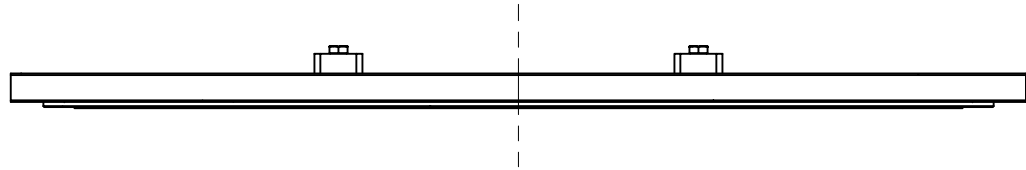
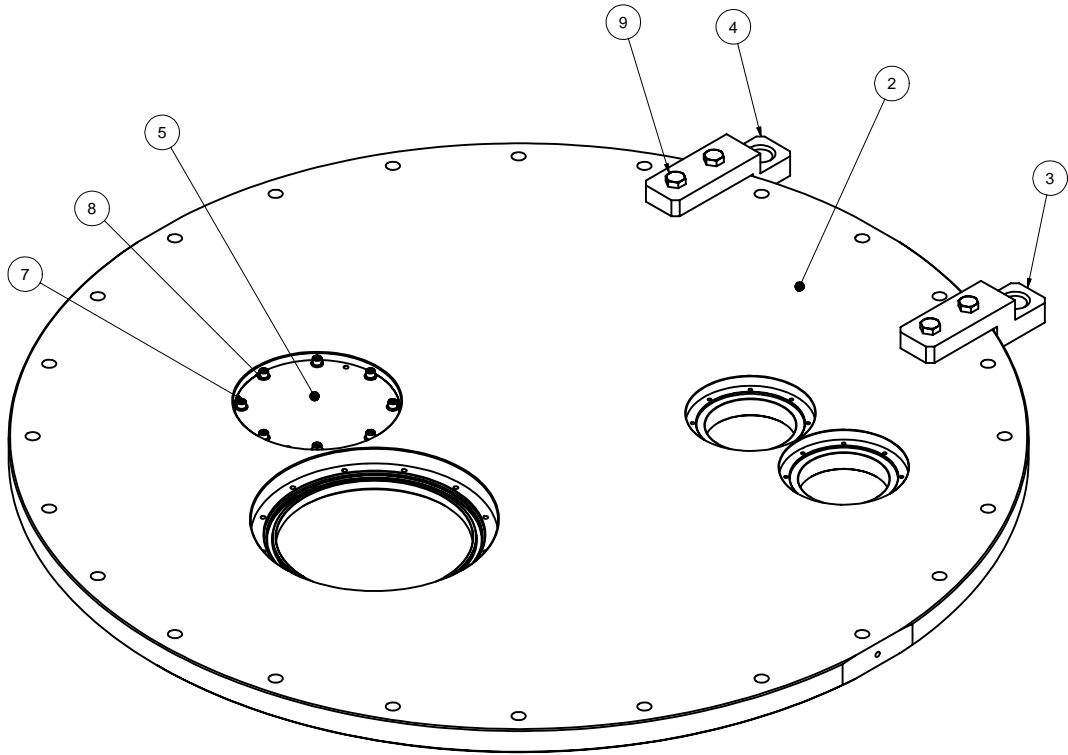


REVISIONS			
SYM.	ZONE	DESCRIPTION	DATE APP.



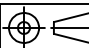

SECTION L-L



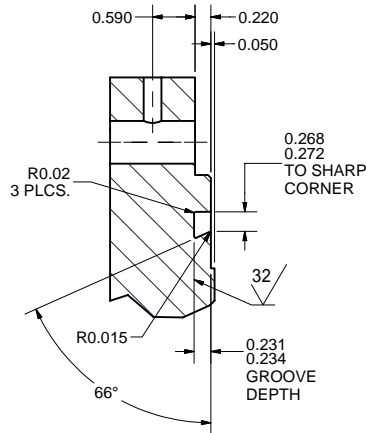
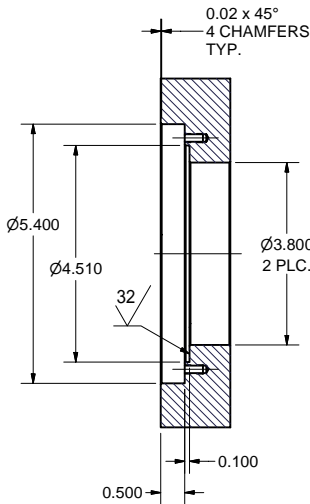
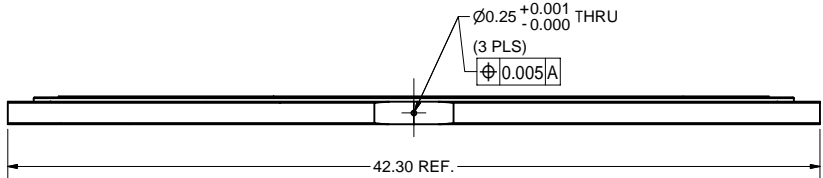
- 1 BEAM ENTRANCE WALL ASSEMBLY
- FILE NAME: 7110-004
SHEET NO.: 1
DFT. SCALE: 1:4
MATERIAL:
QTY: 1 PER VACUUM VESSEL
NOTES: 1. ALL DIMENSIONS FOR REFERENCE ONLY.

FOR MACHINING LUBRICANT USE ONLY
ALKALINE DETERGENT LUBRICANT CIMSTAR 40
OR EQUIVALENT APPROVED BY CORNELL LEPP

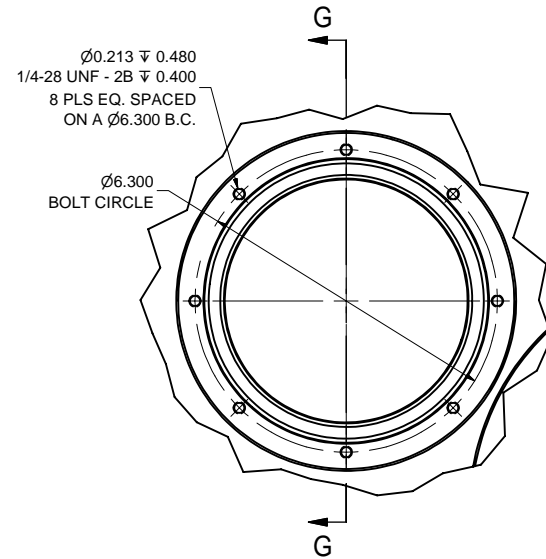
9	PUR.	1/2-13 x 1-1/2 Hex Cap Screw	4			St. Steel	
8	PUR.	1/4 SPRING LOCK WASHER	8			St. Steel	
7	PUR.	1/4-28 x 5/8 Sock. Head Cap Screw	8			St. Steel	
6	PUR.	5.25 ID x 3/16 (#355) O-RING	1			Viton or EPDM	
5	7110-004 (Sh. 4)	WPM PORT BLANK	1			SEE #7110-005	
4	7110-004 (Sh. 3)	EYE BAR LEFT	1			SEE #7110-005	
3	7110-004 (Sh. 3)	EYE BAR RIGHT	1			SEE #7110-005	
2	7110-004 (Sh. 2)	BEAM ENTRANCE WALL PLATE	1				
1	7110-004 (Sh. 1)	BEAM ENTRANCE WALL ASSEMBLY	X				

		ITEM	DWG. NO.		DESCRIPTION			G1	G2	G3	REMARKS		REV.
								QUANTITY					
D	PRINT DISTR.	PLOT DATE: 9/5/2006 CAD FILE NAME: 7110-004.idw											
7110-004 SH. NO. 1 OF 4	CR1	UNLESS OTHERWISE SPECIFIED:		<div><div><div><div>CORNELL UNIVERSITY</div><div></div></div><div>CORNELL UNIVERSITY Floyd R. Newman Laboratory Ithaca, NY 14853</div></div></div>									
		DIMENSIONS ARE IN INCHES:											
		TOLERANCES ON: .00 ± .010 .000 ± .005 FRACTIONS ± 1/64 ANGLES ± 0.5° ALL SURFACES ✓		ERL Horizontal Test Cryomodule Vacuum Vessel Beam Entrance Wall									
REV.	CHECKED BY: VM	DRAWN BY HA		DRAWN FOR VM		DATE 7/10/2006		SCALE		D	7110-004 SH. NO. 1 OF 4		REV.
	APPROVED BY: ML												

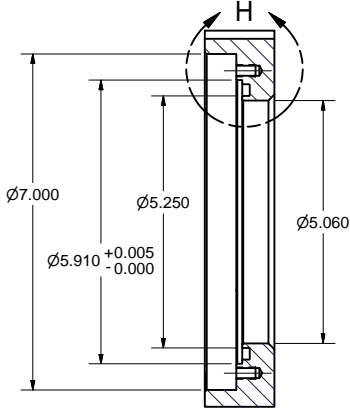
REVISIONS				
SYM.	ZONE	DESCRIPTION	DATE	APP.



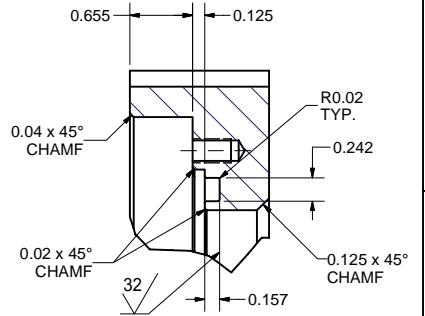
DETAIL E
SCALE 3 / 4



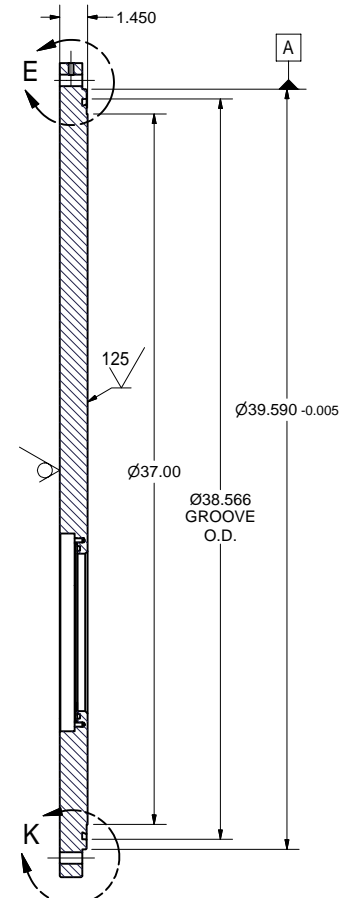
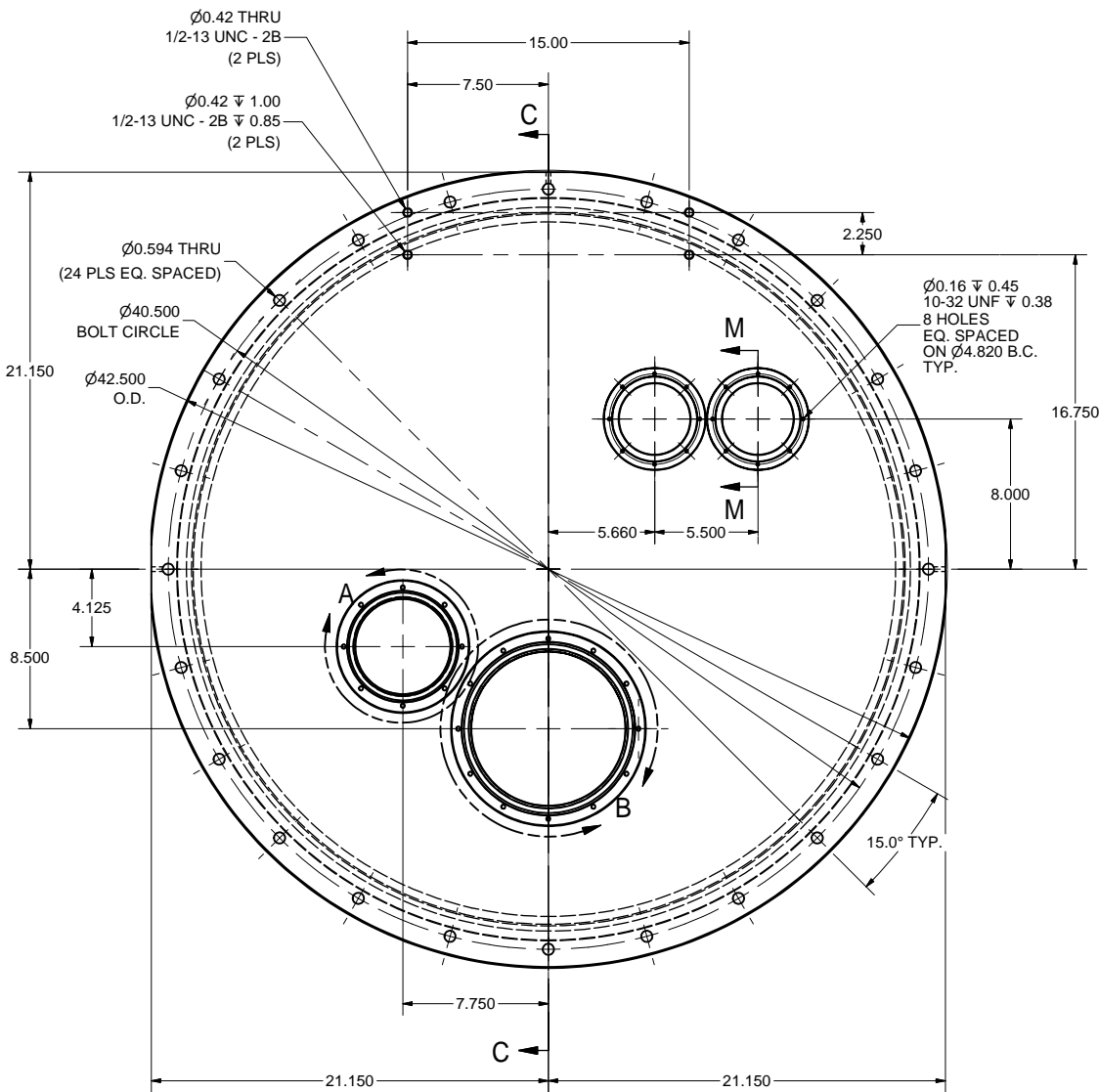
DETAIL A
SCALE 1 / 2



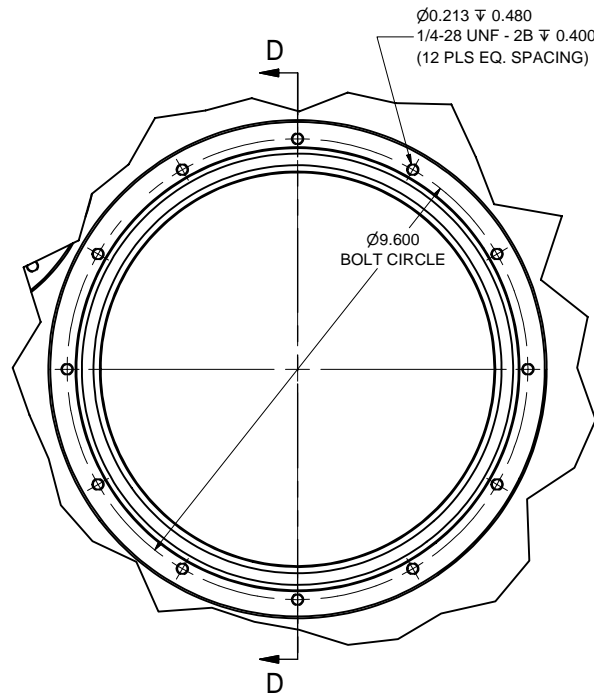
SECTION G-G
SCALE 1 / 2



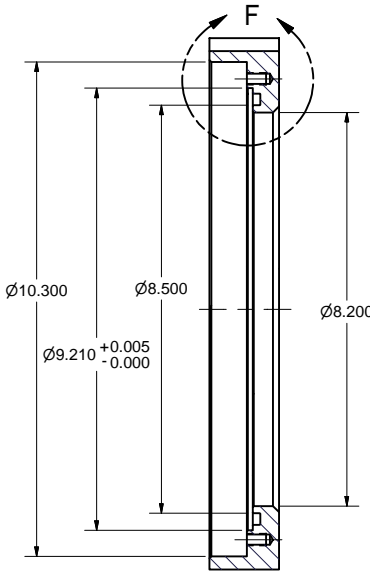
DETAIL H
SCALE 1 : 1



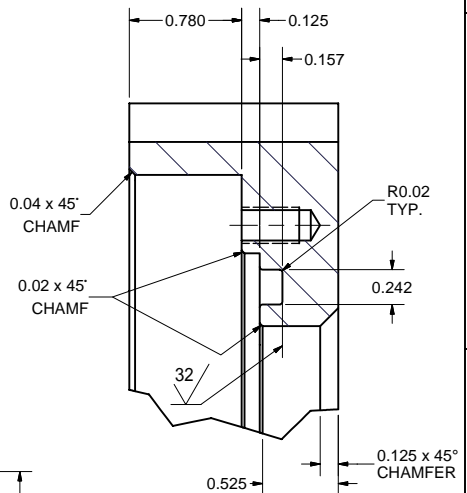
SECTION C-C



DETAIL B
SCALE 1 / 2

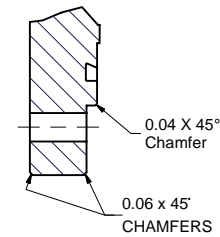


SECTION D-D
SCALE 1 / 2




DETAIL F
SCALE 1.5:1

2 BEAM ENTRANCE WALL PLATE
FILE NAME: 7110-004
SHEET NO.: 2
DFT. SCALE: 1:5
MATERIAL: 1.5" TYPE 304L STAINLESS STEEL SHEET
QTY: 1
NOTES:

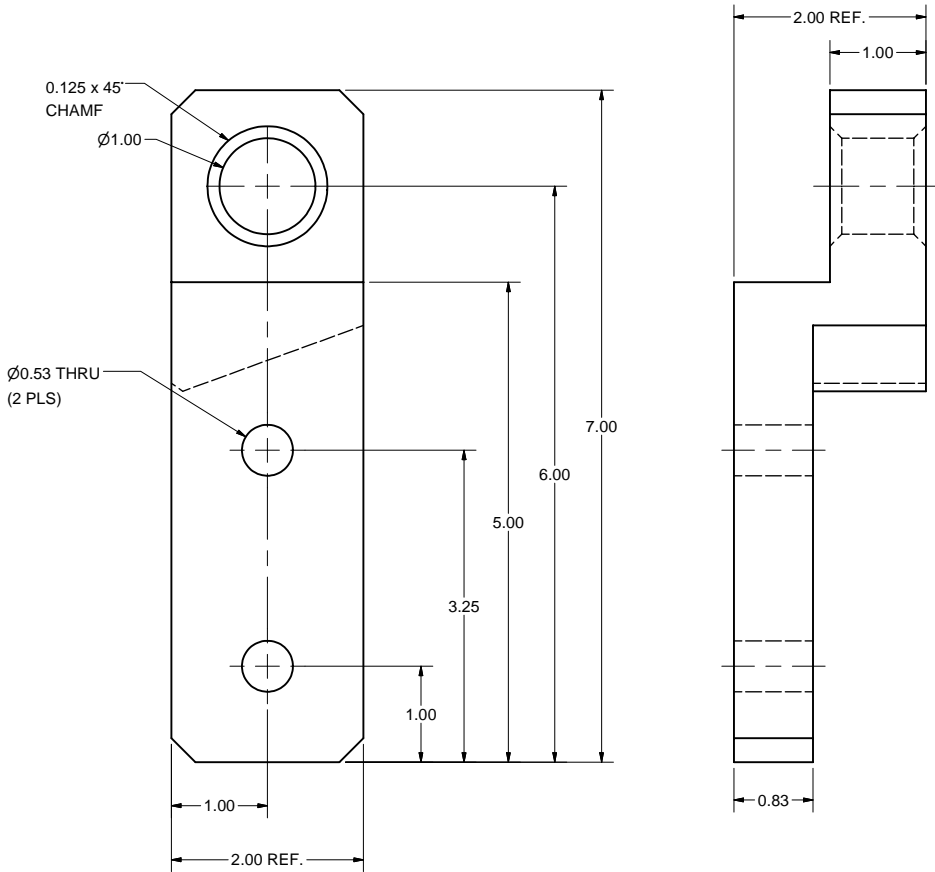


DETAIL K
SCALE 1:2

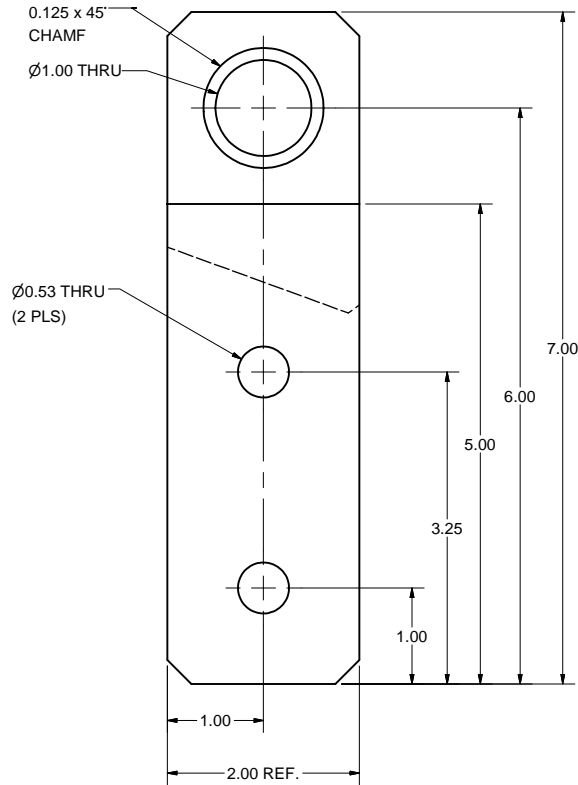
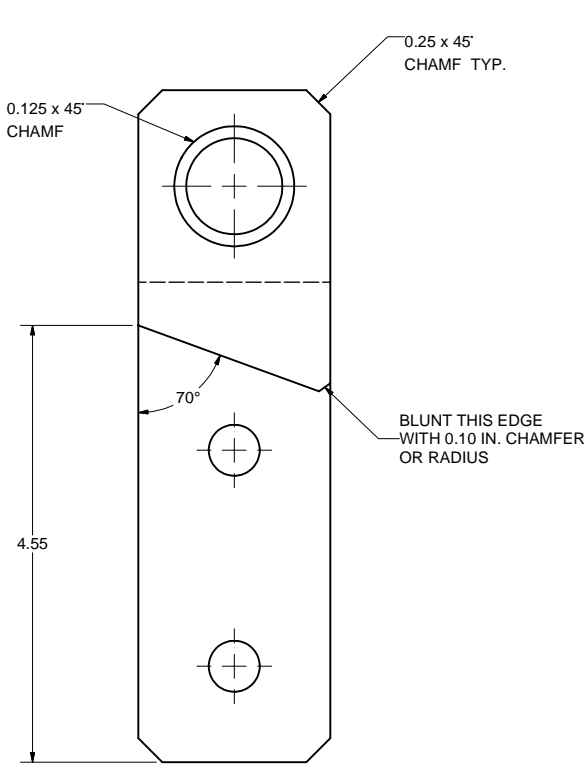
FOR MACHINING LUBRICANT USE ONLY
ALKALINE DETERGENT LUBRICANT CIMSTAR 40
OR EQUIVALENT APPROVED BY CORNELL LEPP

		ITEM	DWG. NO.	DESCRIPTION			G1	G2	G3	REMARKS		REV.
								QUANTITY				
D	PRINT DISTR.	PLOT DATE: 9/5/2006 CAD FILE NAME: 7110-004.idw										
SH. NO. 2 OF 4	7110-004	CR1	UNLESS OTHERWISE SPECIFIED: DIMENSIONS ARE IN INCHES; TOLERANCES ON: .00 ± .010 .000 ± .005 FRACTIONS ± 1/64 ANGLES ± 0.5° ALL SURFACES ✓		<div><div>CORNELL UNIVERSITY Floyd R. Newman Laboratory Ithaca, NY 14853</div></div>							
			ERL Horizontal Test Cryomodule Vacuum Vessel Beam Entrance Wall - Plate Detail									
REV.		CHECKED BY: VM	DRAWN BY HA	DRAWN FOR VM	DATE 7/10/2006	SCALE	D	7110-004		REV.		
		APPROVED BY: ML	SH. NO. 2 OF 4									

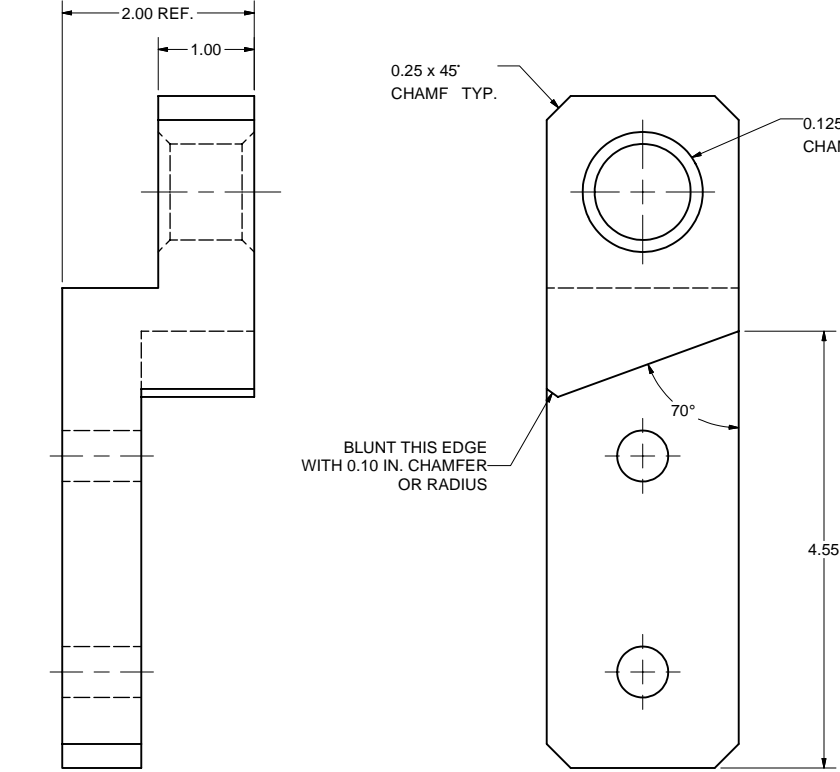
REVISIONS			
SYM.	ZONE	DESCRIPTION	DATE APP.




4 EYE BAR LEFT
FILE NAME: 7110-004
SHEET NO.: 3
DFT. SCALE: 1:1
MATERIAL: 2" x 2" STAINLESS STEEL BAR
QTY: 1 PER ASSEMBLY 2 TOTAL
NOTES:



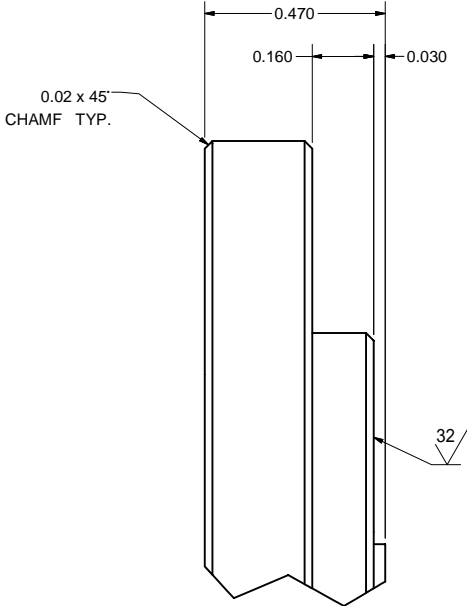
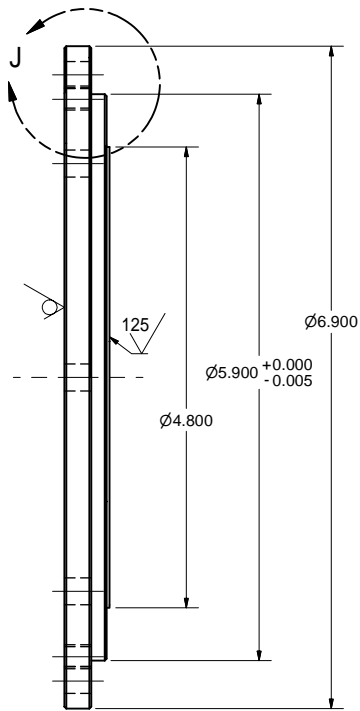
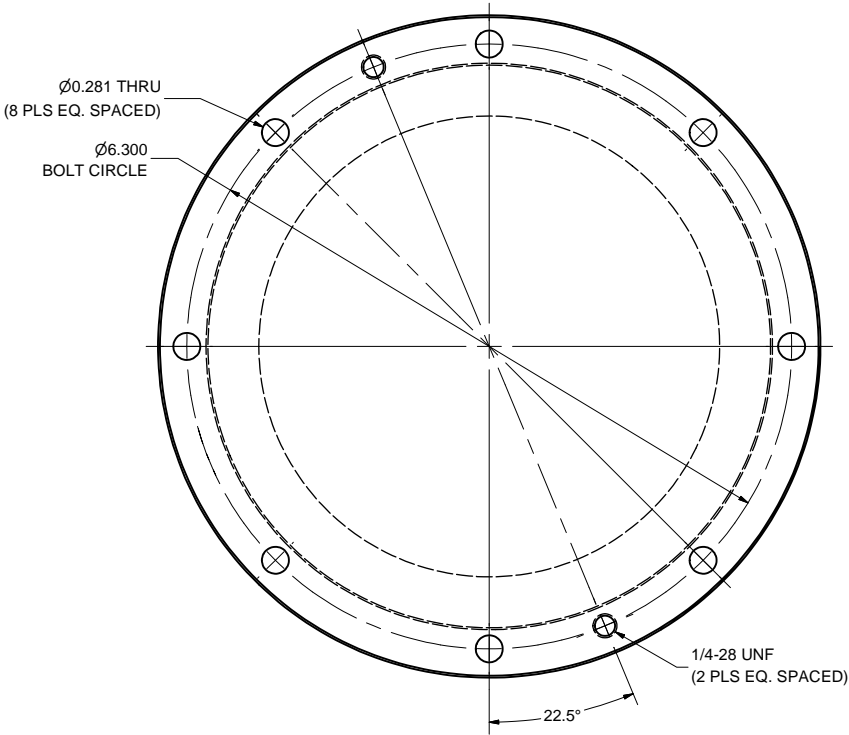
3 EYE BAR RIGHT
FILE NAME: 7110-004
SHEET NO.: 3
DFT. SCALE: 1:1
MATERIAL: 2" x 2" STAINLESS STEEL BAR
QTY: 1 PER ASSEMBLY 2 TOTAL
NOTES:



FOR MACHINING LUBRICANT USE ONLY
ALKALINE DETERGENT LUBRICANT CIMSTAR 40
OR EQUIVALENT APPROVED BY CORNELL LEPP

		ITEM	DWG. NO.	DESCRIPTION			G1	G2	G3	REMARKS	REV.
					QUANTITY						
	PRINT DISTR.	PLOT DATE: 9/5/2006 CAD FILE NAME: 7110-004.idw									
	7110-004 SH. NO. 3 OF 4	CR1	UNLESS OTHERWISE SPECIFIED: DIMENSIONS ARE IN INCHES: TOLERANCES ON: .00 ± .010 .000 ± .005 FRACTIONS ± 1/64 ANGLES ± 0.5° ALL SURFACES ✓		<div><div>CORNELL UNIVERSITY Floyd R. Newman Laboratory Ithaca, NY 14853</div></div> <div>ERL Horizontal Test Cryomodule Vacuum Vessel Beam Entrance Wall - Bar Details</div>						
REV.			CHECKED BY: VM	DRAWN BY HA	DRAWN FOR VM	DATE 7/10/2006	SCALE	D	7110-004 SH. NO. 3 OF 4	REV.	
		APPROVED BY: ML									

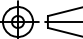



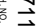
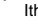

REVISIONS			
SYM.	ZONE	DESCRIPTION	DATE APP.



DETAIL J
SCALE 4 : 1

5 WPM PORT BLANK
FILE NAME: 7110-004
SHEET NO.: 4
DFT. SCALE: 1:1
MATERIAL: 1/2" TYPE 304L STAINLESS STEEL SHEET
QTY: 1 PER ASSEMBLY 2 TOTAL
NOTES:

FOR MACHINING LUBRICANT USE ONLY
ALKALINE DETERGENT LUBRICANT CIMSTAR 40
OR EQUIVALENT APPROVED BY CORNELL LEPP

	ITEM	DWG. NO.	DESCRIPTION			G1	G2	G3	REMARKS	REV.
							QUANTITY			
	PRINT DISTR.	PLOT DATE: 9/5/2006 CAD FILE NAME: 7110-004.idw								
 SH. NO. 4 OF 4	CR1	UNLESS OTHERWISE SPECIFIED: DIMENSIONS ARE IN INCHES: TOLERANCES ON: .00 ± .010 .000 ± .005 FRACTIONS ± 1/64 ANGLES ± 0.5° ALL SURFACES ✓	 CORNELL UNIVERSITY Floyd R. Newman Laboratory Ithaca, NY 14853 LABORATORY FOR ELEMENTARY-PARTICLE PHYSICS							
			ERL Horizontal Test Cryomodule Vacuum Vessel Beam Entrance Wall - WPM Port Blank Detail							
	CHECKED BY: VM		DRAWN BY HA	DRAWN FOR VM	DATE 7/10/2006	SCALE 	 SH. NO. 4 OF 4	REV.		
	APPROVED BY: ML									